



Ability Care
We give but never give up

SERVICES GUIDE

www.abilitycare.org.au



TABLE OF CONTENTS

ABILITY CARE

3

Who we are	3
What we do	3
Our mission	3
Our values	3
Our philosophy	4
Our family of organisations	4
Our people	4
Our Government partners	5

OUR SERVICES

6

Accommodaton Support	6
Respite	7
Day Support Services	7
Case Management	8

OUR LOCATIONS

10

FEE STRUCTURE

10

CONTACT US

10

ABILITY CARE



Who we are

At Ability Care, we are committed to enhancing the quality of life of adults and children with an intellectual, physical and/or sensory disability through individualised services and programs that enhance, teach and strengthen each person allowing them to live the life they want.

Innovative, responsive and flexible in our approach, we understand that every client is unique and we pride ourselves on the collaborative way in which we go above and beyond to support, and advocate in a way that gives and never gives up.

What we do

Provide the best possible outcomes for our clients.

- Day Services
- Respite Services
- Accommodations Services
- Transition Accommodation Services
- Host Family Accommodation
- Case Management
- Advocacy
- Information and Referrals
- Emergency Response

Our mission

To provide a quality support service to people with a disability and their carers in our community and to ensure that this service enhances the quality of life for all who access it.

Our values

- Compassion: Confronted by clients' distress and needs, our response is compassion-based, action-oriented, and grounded in practice wisdom and research.
- Respect: We believe in the intrinsic dignity and worth of every client, and their right to feel safe, valued and respected.
- Acceptance: We value everyone as they are, and for their capacity to make a positive contribution to their family and community.
- Striving for excellence: We maintain a focus on continual learning through reflection, training, feedback and consultation; and seek to be innovative, creative and flexible to develop services that make a real difference.
- Integrity: We uphold ethical practices based on established values of being fair, just, non-partisan, trustworthy, transparent and honest in our dealings with clients, and stewardship of resources.

Our Philosophy

Our philosophy is simple: We give but never give up.

We believe in and work towards ensuring that people have:

- The right to make choices and decisions in their own lives.
- The right to dignity, respect, privacy and confidentiality.
- The right to be valued and appreciated as individuals.
- The right to live a life free from abuse and neglect.
- The right to access services on a non-discriminatory basis.
- The right to live and feel part of their community.
- The right to access and achieve life long learning.
- The right to be supported to 'reach their potential' in all areas of life.

Our Family

Ability Care, is a part of a family of international organisations (Community Services Group) collectively committed to supporting and enhancing the quality of life of the most vulnerable.



Our People

If there was one word to describe our people it would undoubtedly be 'passionate'. When you have hundreds of volunteers collectively living and breathing our values, vision and mission; what you get is something truly special; a team that will give but never give up.

Diverse in skills, experience and perspectives; our people are united in our desire to provide the best possible outcomes for people with disabilities.

"Nothing great in the world has ever been accomplished without passion."

Georg Wilhelm Friedrich Hegel

Our Government Partners

Innovative, flexible and collaborative in our approach, Ability Care enjoys a strong and cohesive working relationship with our funding bodies.

Our Government partners provide the funding required to ensure the most vulnerable individuals, families and communities can achieve their potential.

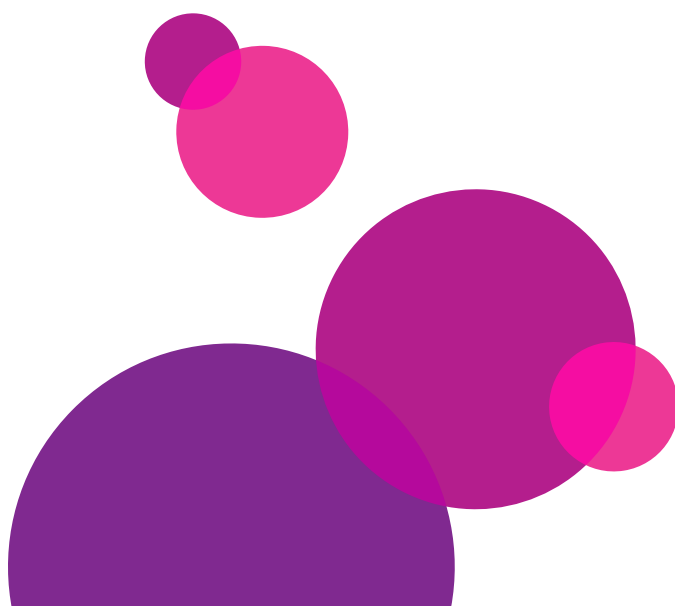
We are committed to:

- Providing the best possible outcomes for our clients
- Achieving value for money in our service agreements
- Accurately determining community and individual needs
- Striving for clear and consistent agreements on outcomes, outputs and quality
- Supporting innovation and excellence in service delivery
- Cultivating relationships with our funders, clients and other organisations within the community sector to develop the most appropriate services and service mix on the basis of identified need, strengthening person centred planning and individual choice.

Benefits

Partnering with Community Services Group achieves:

- Value for money
- Fairness, integrity and transparency
- Cooperation
- Diversity
- Consistency
- Coordination
- Probity
- Evidence-based approach
- Positive outcomes
- Accountability
- Respect
- Inclusiveness



OUR SERVICES

Our focus is on the empowerment of the individual through respecting decisions and choice making, promoting dignity, developing skills, encouraging independence, integration into the community and respecting rights and roles of all human beings.

Accommodation Support

Adult Accommodation

Accommodation houses have been set up with the purpose of providing support and services to adult individuals to allow them to live as independently as possible within a home of their own.

Accommodation services are based on holistic 24/7 support models.

Each house consists of 2 to 4 clients within a co-tenancy arrangement. Staff are provided accommodation & office space within each co-tenancy arrangement.

The supports within each home vary depending on the needs of each individual. Individual personal plans and specific management plans are developed to ensure all support offered is designed specifically for each person.

Supports and services offered by Ability Care will promote the inclusion of each individual in the life of their local community. Inclusion is not just about living in the community, it is about being included and taking part in everyday life in meaningful ways.

Individuals contribute to their home environment (to the best of their ability) both physically & financially through their income/pension.

What we do:

- Maintain and/or build on the skill-set of each individual & improve their ability to live a rich & meaningful life.
- Encourage clients to be self-reliant in all aspects of their lives, as much as possible.
- Take a holistic approach within each home and assist and support all aspects of each person's life.
- Support individuals to make informed decisions.
- Ensure the personal dignity of each individual is upheld by ensuring the privacy and confidentiality of all who reside within the home.
- Ensure that all client voices are heard and rights upheld.
- Empower individuals by ensuring they have the appropriate skills to undertake chosen tasks, the development of clients self-esteem and sense of self-worth is a primary goal.
- Staff interaction with clients will promote equal participation, rather than dependency.

Transitional Accommodation

Assists young people to transition from out-of-home care to disability supported accommodation. The aim of the program is to support our clients to access community life and develop and maintain community living arrangements.

Some young people may receive a combination of ongoing and one-off support, while others may only require time-limited support to help them transition to adult independent community life.



Ability Care support our clients to:

- Live at home and manage the household
- Participate in recreation and leisure activities
- Live within an accommodation co-tenancy arrangement
- Strengthen personal and family relationships and networks

Emergency and Crisis

Emergency and Crisis Program - This program is specifically designed for individuals in crisis that require emergency accommodation situations until permanent accommodation solutions can be sought.

Emergency support is strictly time-limited and does not represent a commitment to recurrent funds for ongoing support being made available.

Emergency Response Funding - Allows for in home/out of home respite or equipment.

Host Family - This program provides individuals with accommodation with an alternative family placement.

The Host Family are responsible for meeting the individual's daily care needs, as well as facilitating access to social and recreational activities within the community.

Respite

For a family caring for a relative with a disability, the demands of caring can be greater than for other families. Parents, brothers and sisters of a person with a disability need the same opportunities for relaxation as anyone else. Yet these families

often have difficulty finding someone to care for their relative while they have time out, spend time with other children, or carry out other responsibilities.

Ability Care have an extensive range of respite options for children and adults ensuring families have that much needed break so they can carry on in the caring role for longer.

Adult Respite

Centre Based Respite - Flexible respite for Adults aged between 18-65 years. Offering day/ overnight respite, weekend camps and emergency respite.

Contribution for food and lodgings required.

Aging Carer Respite - Respite options are available for people whose primary carer is over the age of 60 years and indigenous carers over 45 years old. Respite consists of 3 days and 2 nights - on a bimonthly roster or as negotiated with families.

Contribution for food and lodgings required.

Children's Respite

Centre Based Respite - Flexible respite for children aged between 6-18. Offering day/ overnight and emergency respite to families in need.

Contribution for food and lodgings required.

Vacation Care - Day and overnight respite and camps for school aged children during the school vacation period.

Contribution for food and lodgings required.

Children's Flexible Respite - Flexible respite options for children aged between 0-12 years.

The service provides opportunities for children to develop skills for academic achievement, promote their participation, and assist with skills and support to thrive in mainstream care and education settings such as child care, health services, kindergarten, prep, and school.

Contribution for food and lodgings required.

OUR SERVICES

Emergency Respite

The service provides temporary accommodation for people in crisis situations until permanent accommodation solutions can be sought.

Contribution for food and lodgings required.

Day Services

Independent Living Skills - Developed to increase, maintain and enhance daily living skills and develop a greater level of independence within all aspects of life.

Community Access - Includes a range of recreational and social activities, integration and participation within the wider community.

Gardening - Designed to encourage physical participation, sensory activities and practical knowledge of gardening for food and fun.

Work Experience - Individuals participate in work experience placements within the greater community. This assists with skill building, developing basic work ethics, work skills and socialisation.

Sensory Programs - Designed to assist individuals who have high and complex support needs through specific programs. It encourages language development, cognitive stimulation and awareness and identification of the environment and its surroundings.

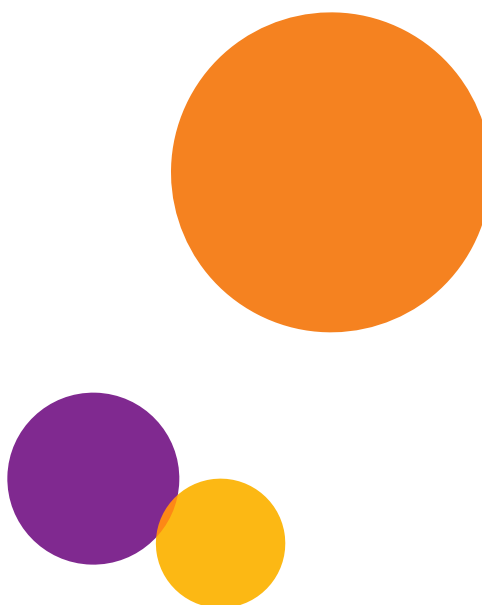
Peer and Social Networking/Community Inclusion - Activities designed to assist individuals to engage meaningfully with socially valued activities in the community.



Case Management

Children's Continence Management Service

The goal of the CCMS is to promote, restore and maintain continence in children and young people with a disability. Assessment, intervention and management are critical to the promotion, restoration and maintenance of continence. This includes ensuring that the provision of continence aids is linked to continence assessment and intervention. A minimum acceptable standard for a child or young person with a disability and incontinence is social continence.



Locations

To find the centre closest to you please visit www.abilitycare.org.au

Fee Structure

Unfunded clients

Unfunded clients do not pay a fee for service however we ask for a contribution of \$10.00 per day towards transport, food and resources. Waiting lists apply.

Funded clients

Funded clients are required to contribute towards transport by utilizing their mobility allowance and in some cases a personal contribution applies, depending on distances traveled and frequency of community access.

Costs of community access activities are the responsibility of the client.

Fee for service clients

A fee for service applies to funded clients that have a Disability Services Qld package held by another service and attend Ability Care Ltd.

Contact Us

1300 224 148

www.abilitycare.org.au

enquiries@abilitycare.org.au



